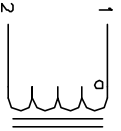


The information contained in this drawing is the sole property of CWS Coil Winding Specialist. Any reproduction in part or whole without written permission of CWS Coil Winding Specialist is prohibited.

REVISION HISTORY

REV	ECN	DESCRIPTION	SIGN & DATE			
			BY	DATE	CHK	DATE
C		PRODUCTION RELEASE	BJN	1/17/07	JLJU	1/17/07



SCHEMATIC

USING A PERMANENT MARKING METHOD

MARK PART NUMBER AND REVISION, IF APPLICABLE
IF NEEDED, WRAP INDUCTOR WITH GLASS OR MYLAR TAPE

TO THE CORE

MUST REST FLAT ON PCB. LEADS MUST BE TANGENT
FLUSH WITH THE COIL EDGE. AS SHOWN (I.E. COIL
REMOVE INSULATION AND TIN LEADS 0.75 INCH

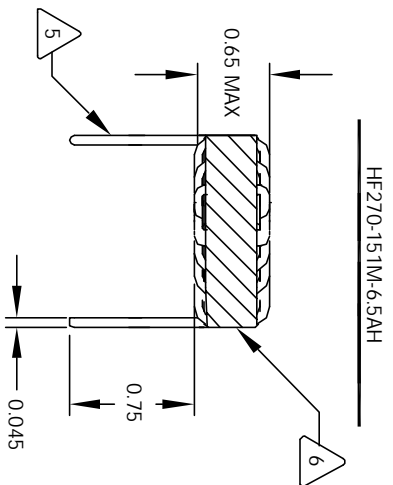
WIND COILS EVENLY SPACED AROUND THE CORE
CONSTRUCTION:

HI-POT TEST FOR WINDING TO CORE ISOLATION = 500VDC MIN
CURRENT RATING : 6.5 AMPS, 40 °C TEMP. RISE, NO AIR FLOW
DCR = 35.0 MILLI-OHMS MAX.
DC BIASED = 6.5 AMPS, INDUCTANCE = 126 UH
DC BIASED = 9.0 AMPS, INDUCTANCE = 120 UH
INDUCTANCE = 150 UH +- .10% @ LOW DC BIAS, 1 KHz, 250mV
SPECIFICATIONS:

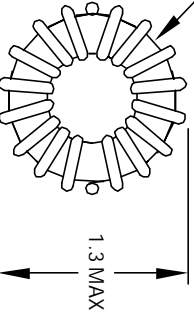
WIRE: UL RECOGNIZED 200°C RATED MAGNET WIRE
CWS BYTEMARK OR OTHER APPROVED PART
CORE: COATED HIGH FLUX TOROIDAL CORE

RATING CLASS B (130°C MIN.) REQUIRED
MATERIAL: UL RECOGNIZED 94V-0 FOR FLAMMABILITY

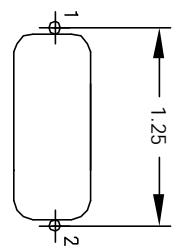
NOTES: TOROIDAL POWER CHOKER. ALL DIMENSIONS IN INCHES



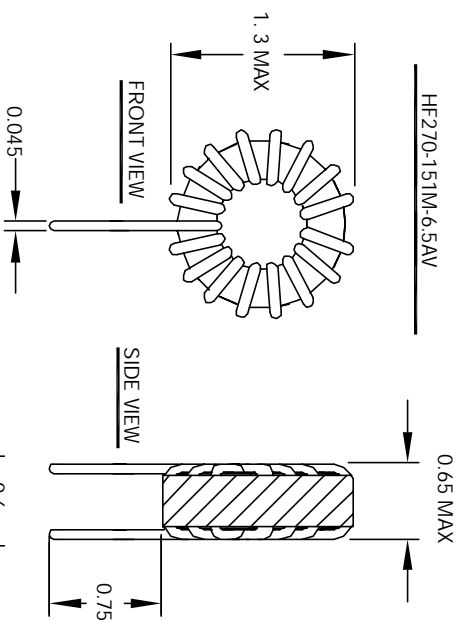
FRONT VIEW



BOTTOM VIEW

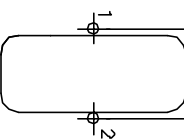


MOUNTING HOLES PATTERN



FRONT VIEW

SIDE VIEW



MOUNTING HOLES PATTERN

UNLESS OTHERWISE SPECIFIED	DIMENSIONING AND TOLERANCE PER ANSI Y14.5M
ALL DIMENSIONS ARE IN INCHES AND (UNLESS STATED)	TOLERANCE INCHES: .XX = ±.005 .XY = ±.015 .X = ±.030
ANGLE PROJECTION	DO NOT SCALE DRAWINGS

CODE IDENT	MFG. P/N	DESCRIPTION	ITEM NO.
AUTOCAD SOLIDWORKS SIGN	X	COWS COM, INC www.cowls.com	
DATE	DATE	CWS Coil Winding Specialist. 353 WEST GROVE AVE ORANGE, CA 92665	
DRAWN: EAJN	1/17/07	TITLE: Toroidal Power Chokes	
DESIGN: JLJU	1/17/07	SIZE: DIM. IN: B	
ENGR: KSUM	1/17/07	SCALE: 2=1	
APPR: JLJU	1/17/07	HF270-151M-6.5A	REV C
			SHEET 1 OF 1